




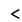


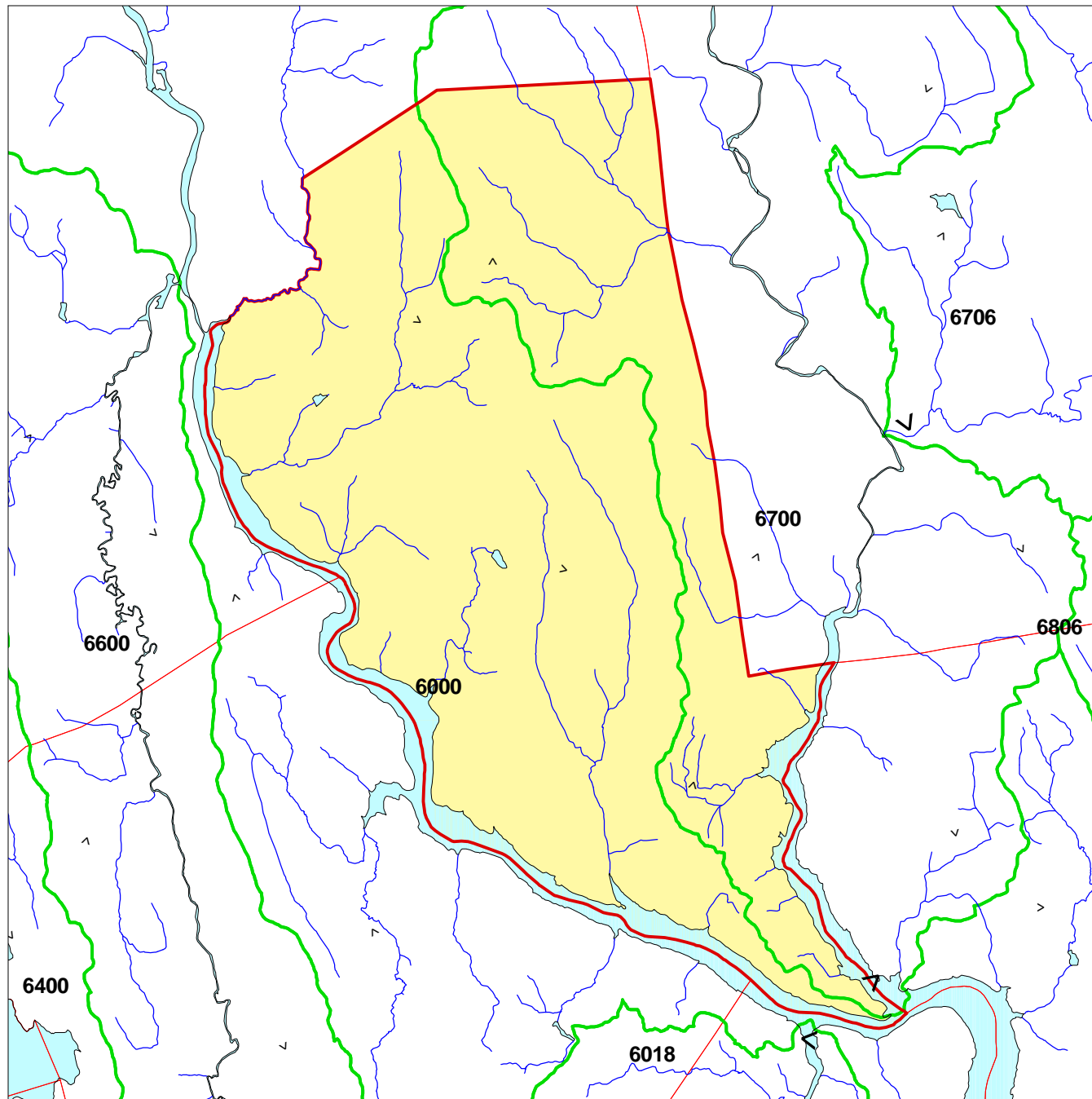
# BRIDGEWATER CONNECTICUT SUBREGIONAL BASINS AND SURFACE WATER FLOW DIRECTIONS

## Explanation

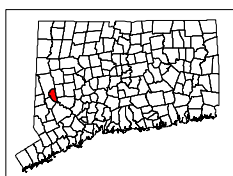
-  Town Boundary
-  Subregional Watershed Boundary
- 4201** Subrg. Basin ID# - as designated by CTDEP
-  Watercourse  Open Water
-  Basin Outlet
-  Surface Water Flow Direction

The table provides statistics for each subregional basin. Shown are the areas of the basin within the town, the percentage for that area, and the percent of the town covered by each basin.

Sbas_nc	AcresInTw	Percofb	Percoftwn
6000	7495.70	1.9	67.5
6700	3611.00	8.0	32.5



Town Area: 11107 Acres



Digital layers provided by the CTDEP.  
Map composed by the NEMO project.  
For educational purposes only.



The University of Connecticut, CES: November 01, 1999